

GM and GM-A Centrifugal Pump

50 Hz: 0.55 kW.



Fig. 1. GM-A without shroud and legs.

Volumetric flow

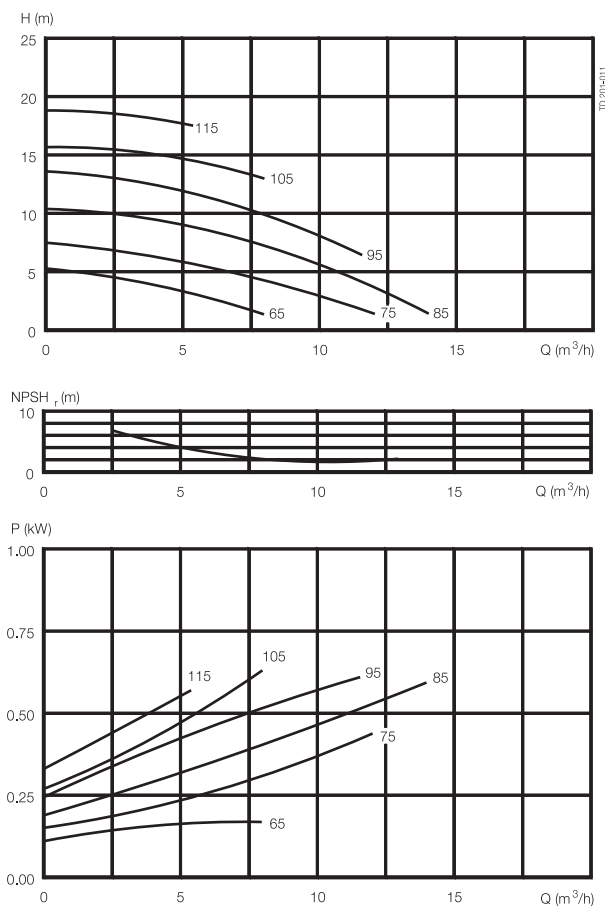


Fig. 2. Flow chart.

Connections (mm)

Inlet and outlet: 38 mm (1 1/2").

DI 33	ISO	ISO	DIN	SMS	BS
DII 25	Clamp	Male	Male	Male	Male
M I	12	23	22	23	19
M II	12	21	22	20	19

Options

- A. Impeller with reduced diameter.
- B. Fitted on stainless steel legs (3 legs).
- C. Shroud and adjustable legs (4 legs).
- D. Other voltage, frequency or flameproof motor.
- E. Inlet and outlet with flanges.
- F. Counter flanges, collars and seal rings for flanged connections.
- G. Product wetted seals of EPDM, Fluorinated rubber (FPM) or PTFE.
- H. Rotating seal ring of Silicon Carbide.

Ordering

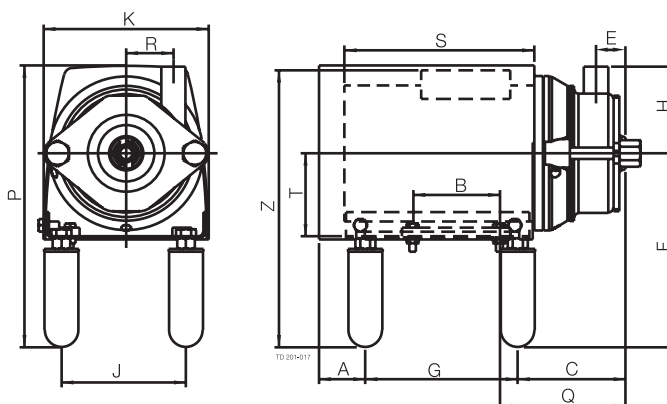
Please state the following when ordering:

- Pump type.
- Connections.
- Voltage and frequency.
- Flow rate, pressure and temperature.
- Density and viscosity of product.
- Options.

Note!

For further details see also PD 65036 and instruction IM 70023.

Dimensions (mm)



a. GM-A, without shroud and legs

Size		motor
		0.55 kW
A		46
B		90
C		103
E		31
F	min.	185
F	max.	215
G		158
H		90
J		134
K		171
P	min.	294
P	max.	324
Q		128
R		49
S		209
Weight (kg) GM		11
Weight (kg) GM-A		13